

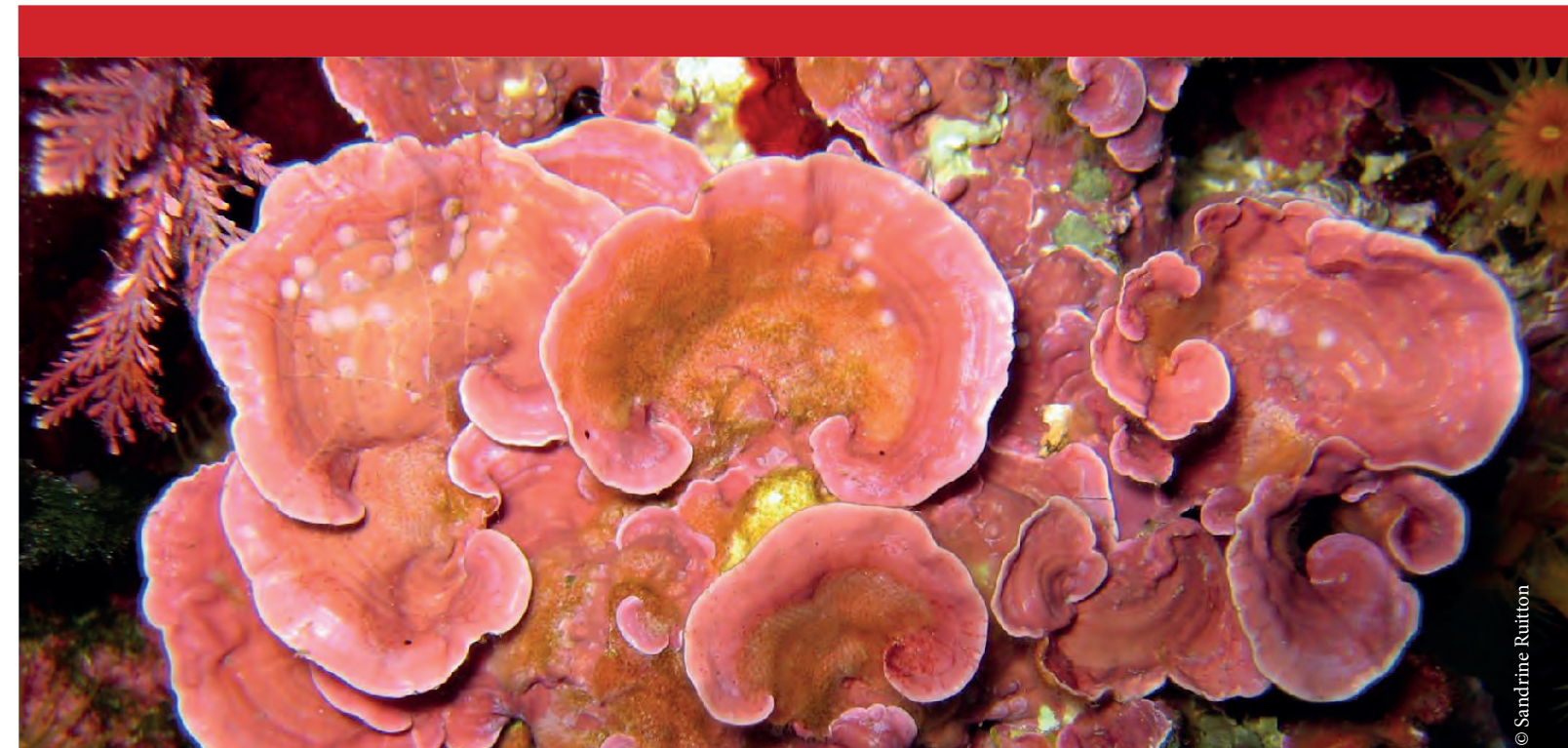


PROCEEDINGS OF 2nd MEDITERRANEAN SYMPOSIUM ON THE CONSERVATION OF CORALLIGENOUS AND OTHER CALCAREOUS BIO-CONCRETIONS

Portorož, Slovenia, 29-30 October 2014

ACTES DU 2^{ème} SYMPOSIUM MÉDITERRANÉEN SUR LA CONSERVATION DU CORALLIGÈNE ET AUTRES BIO-CONCRÉTIONS

Portorož, Slovenie, 29-30 octobre 2014



© Sandrine Ruitton

Regional Activity Centre for Specially Protected Areas (RAC/SPA)
Centre d'Activités Régionales pour les Aires Spécialement Protégées (CAR/ASP)

Boulevard du Leader Yasser Arafat | B.P. 337 - 1080 Tunis Cedex -Tunisia
phone: +216 71 206 649 / +216 71 206 485 / +216 71 206 851 / +216 71 206 765
Fax: +216 71 206 490
E-mail: car-asp@rac-spa.org
web: www.rac-spa.org



INSTITUTE OF THE REPUBLIC OF SLOVENIA
FOR NATURE CONSERVATION



PROCEEDINGS OF 2nd MEDITERRANEAN SYMPOSIUM ON THE CONSERVATION OF CORALLIGENOUS AND OTHER CALCAREOUS BIO-CONCRETIONS

Portorož, Slovenia, 29-30 October 2014

ACTES DU 2^{ème} SYMPOSIUM MÉDITERRANÉEN SUR LA CONSERVATION DU CORALLIGÈNE ET AUTRES BIO-CONCRÉTIONS

Portorož, Slovenie, 29-30 octobre 2014

With the support of MedKeyhabitats project Financed by the MAVA Foundation

Avec le support du projet MedKeyhabitats Finance par la fondation MAVA



The finding interpretation and the presentation of the material, expressed in this publication are entirely those of authors and should not be attributed to UNEP.

Les informations et la présentation des données, qui figurant dans cette publication sont celles des auteurs et ne peuvent être attribuées au PNUE.

Copyright :

© 2015 United Nations Environment Programme, Mediterranean Action Plan, Regional Activity Center for Specially Protected Areas (RAC/SPA)

© 2015 Programme des Nations Unies pour l'Environnement, Plan d'Action pour la Méditerranée, Centre d'Activités Régionales pour les Aires Spécialement Protégées (CAR/ASP)

This publication may be reproduced in whole or in part, and in any form for educational or non-profit purposes, without special permission from the copyright holder, provided acknowledgement of the source is made. No use of this publication may be made, for resale or for any other commercial purpose whatsoever, without permission in writing from UNEP.

La présente publication peut être reproduite en totalité ou en partie, et sous n'importe quelle forme, dans un objectif d'éducation et à titre gracieux, sans qu'il soit nécessaire de demander une autorisation spéciale au détenteur du copyright, à condition de faire mention de la source. La présente publication ne peut être utilisée, pour la revente ou à toutes fins commerciales, sans un accord écrit préalable du PNUE.

Citation :

UNEP/MAP – RAC/SPA, 2015. Proceedings of the second Mediterranean Symposium on the conservation of Coralligenous and other Calcareous Bio-Concretions (Portorož, Slovenia, 29-30 October 2014). BOUAFIF C., LANGAR H., OUERGHI A., edits., RAC/SPA publ., Tunis: 260 p.

PNUE/PAM – CAR/ASP, 2015. Actes de deuxième Symposium Méditerranéen sur la Conservation du Coralligène et autres Bio-Concrétions (Portorož, Slovénie, 29-30 octobre 2014). BOUAFIF C., LANGAR H., OUERGHI A., édits., CAR/ASP publ., Tunis: 260 p.

ISBN: 978-9938-9574-2-6

AVANT-PROPOS

Suite aux recommandations du **Plan d'action pour la conservation de la végétation marine en mer Méditerranée** (adopté par les Parties contractantes à la Convention de Barcelone, en 1999), du **Plan d'action pour la conservation du coralligène et des autres bio-constructions de Méditerranée** (adopté par les Parties contractantes à la Convention de Barcelone, en 2008), du **Plan d'Action pour la conservation des habitats et espèces associés aux monts sous-marins, aux grottes et canyons sous-marins, aux fonds durs aphotiques et aux phénomènes chimio-synthétiques en mer Méditerranée (Plan d'action pour les habitats obscurs)** (adopté par les Parties contractantes à la Convention de Barcelone, en 2013) et dans le but du développement des connaissances, une série de symposiums scientifiques, dédiée à ces habitats, a été initiée en 2000 par l'organisation du 1^{er} symposium Méditerranéen sur la végétation marine. Ces initiatives visent essentiellement à faire le point sur les données scientifiques disponibles et à promouvoir la coopération entre les spécialistes qui travaillent en Méditerranée.

Cette année, avec la mise en œuvre du projet de Cartographie des habitats marins clés de la Méditerranée et la promotion de leur conservation par l'établissement d'Aires Spécialement Protégées d'Importance Méditerranéenne (ASPIM) « Projet Medkeyhabitats » financé par la fondation MAVA, l'opportunité s'est présentée pour organiser ensemble les symposiums suivants:

- 5^{ème} Symposium Méditerranéen sur la Végétation Marine
- 2^{ème} Symposium Méditerranéen sur la conservation du Coralligène et autres Bio-concrétions
- 1^{er} Symposium Méditerranéen sur la conservation des Habitats Obscurs

Suite à l'offre de « the institute of the republic of Slovenia for nature conservation » lors du quatrième symposium organisé à Yasmine-Hammamet (Tunisie) du 2 au 4 décembre 2010 d'abriter la 5^{ème} édition du même symposium, il a été convenu de les organiser ensemble back to back à Portorož, Sloveie, du 27 au 31 octobre 2014 comme suit :

- 5^{ème} Symposium Méditerranéen sur la Végétation Marine du 27 au 28 octobre 2014
- 2^{ème} Symposium Méditerranéen sur la conservation du Coralligène et autres Bio-concrétions du 29 au 30 octobre 2014)
- 1^{er} Symposium Méditerranéen sur la conservation des Habitats Obscurs le 31 octobre 2014

Cette édition a vu l'inscription de plus de 140 participants en provenance de 17 pays Méditerranées, ce ne sont pas moins de 126 communications orales et posters qui devraient y être présentés.

Cette édition sera aussi l'occasion d'aborder des sujets d'actualités tels que les invasions biologiques, le réchauffement global, et leurs impacts sur les habitats clés de Méditerranée et de renforcer les liens entre les scientifiques et entre les institutions scientifiques.

Khalil ATTIA
Directeur du CAR/ASP

Sandrine RUITTON, PERSONNIC S., BALLESTEROS E., BELLAN-SANTINI D., BOUDOURESQUE C.F., CHEVALDONNÉ P., BIANCHI C.N., DAVID R., FÉRAL J.P., GUIDETTI P., HARMELIN J.G., MONTEFALCONE M., MORRI C., PERGENT G., PERGENT-MARTINI C, SARTORETTO S., TANOUE H., THIBAUT T., VACELET J., VERLAQUE M.

Aix-Marseille Université and Toulon Université, Mediterranean Institute of Oceanography (MIO), UMR CNRS / IRD UM 110, 13288 Marseille cedex 09, France.

E-mail: sandrine.ruitton@mio.osupytheas.fr

AN ECOSYSTEM-BASED APPROACH TO ASSESS THE STATUS OF THE MEDITERRANEAN CORALLIGENOUS HABITAT

Abstract

Coralligenous outcrops are a Mediterranean sciaphilic habitat whose three-dimensionally layered communities develop on a basal biogenic concretion of calcareous red algae, along with a rich assemblage of sciaphilic sessile animals. The complexity of the evaluation of the ecological status of coralligenous is on a par with the complexity of this habitat. Biotic indices developed to implement the EU Water Framework Directive reflect the ecological status of the environment using species whose function, population or status depend on the quality of the water column. However, the state or achievement of good quality in a water body and the apparent health of some biological indicators are not always indicative of good structure and functioning of the whole ecosystem, even if they are key-species or ecosystem engineers. The new indices to be developed according to the Marine Strategy Framework Directive (MSFD) of the EU require an ecosystem approach, which takes into account the functioning of the ecosystem. Here, on the basis of a simplified conceptual model of the ecosystem, we propose an Ecosystem-Based Quality Index (EBQI) focused on the structure and functioning of coralligenous outcrops. The coralligenous EBQI is based upon (1) a set of representative functional compartments, (2) the weighting of these compartments and (3) the assessment of their quality by comparison with an assumed baseline. The implementation of the EBQI is non-destructive, relatively robust, according to the selection of the compartments and to their weighting, and is associated with confidence indices (both at the level of each compartment, and for the overall score), thus indicating possible weaknesses and biases in the data and therefore the need for further field data acquisition.

Key-words: Coralligenous; Ecosystem-based approach; Marine Strategy Framework Directive; biotic index; Mediterranean Sea.

Introduction

Depending on a number of biotic and abiotic factors, several assemblages could coexist or dominate in coralligenous habitats, over a wide depth distribution range (from 20 m down to -120 m). Even if coralligenous outcrops are not a single habitat but a combination of different habitats, we will use hereafter the term of 'ecosystem'. According to Ballesteros (2006), the coralligenous outcrop is a hard substratum of biogenic origin mainly produced by encrusting calcareous algae growing in dim light conditions. Even if such algae could also grow near the surface, shallow-water concretions are excluded from this work. Human activities can profoundly alter the environment, species composition and the functioning of the coralligenous ecosystem. Biotic indices, which reflect the quality of the environment, are extensively used in the marine realm, especially in the context of European Directives, to (i) assess the quality of a water body, (ii) to indicate the respective weighting of processes

such as e.g. currents, sedimentation and climate under natural and anthropogenic forcing, and (iii) to monitor the status of species of interest, whether emblematic species, indicators of ecosystem health or indicators of pollution. However, does an index based on the health of a single species give information about the health of the entire ecosystem to which it belongs, even if it is a key-species or an ecosystem engineer? A key point in the Marine Strategy Framework Directive (MSFD, 2010/477/EU) is based on the ecosystem-wide evaluation of the ‘good environmental status’ in order to ensure that the marine environment is at a level that allows uses, exploitations and activities by current and future generations.

Material and methods

The method developed by Personnic *et al.* (2014) for *Posidonia oceanica* meadows has been adapted to the coralligenous ecosystem. The first step was to design a simplified conceptual model of the functioning of the ecosystem; it includes 10 functional compartments and 11 parameters (Fig. 1; Tab. 1). The DELPHI process was used to integrate the expert judgment (Dalky & Helmer, 1963). For each ecosystem compartment, a set of relevant parameters according to expert judgment was chosen and assessed through a semi-quantitative scale: very bad (0), bad (1), moderate (2), good (3), and very good (4) ecological status (S in equation 1). Compartments were balanced, according to their relative weight (W) in the ecosystem functioning according to expert judgment, from 5 (highest weight) to 1 (lowest weight). The scores of all compartments were added up, is on a par with which gave the final mark of the ecosystem status (Ecosystem Based Quality Index EBQI) at a given site. For practical purposes, the EBQI was converted to a scale from 0 (worst quality) to 10 (best quality) (equation 1).

$$EBQI = \left[\frac{\sum_{i=1}^{11} (W_i \times S_i)}{\sum_{i=1}^{11} (W_i \times S_{max})} \right] \times 10 \quad \text{Equation (1)}$$

For each compartment status, a Confidence Index (CI) was proposed. The CI was evaluated through a semi-quantitative scale: (0) no quantitative field data and no suitable expert judgment; (1) no quantitative field data, but ancient expert judgment; (2) no quantitative field data but recent expert judgment; (3) field data recent, partially completed with expert judgment and (4) field data available, recent and suitable, obtained with the recommended methods. The Confidence Index of the EBQI (CI_{EBQI}), which ranges between 0 (worst) and 10 (best), was obtained by equation 2:

$$CI_{EBQI} = \left[\frac{\sum_{i=1}^{11} (W_i \times CI_i)}{\sum_{i=1}^{11} (W_i \times CI_{max})} \right] \times 4 \quad \text{Equation (2)}$$

Results

A simplified conceptual model of the functioning of coralligenous ecosystem has been designed using scientific expert judgement and information collected from the literature (*in* Ballesteros, 2006 and references therein). This model encompasses the following compartments (boxes; Fig. 1):

The builders, i.e. MPOs (Multicellular Photosynthetic Organisms) and invertebrates (box 1; Fig. 1). The framework of coralligenous outcrops is the bioconcretion by mainly encrusting, foliaceous and articulated calcareous ‘macroalgae’ (MPOs) belonging to the Corallinales (red algae). This biogenic concretion is not only due to primary producers,

but also to invertebrate builders (bryozoans, serpulid annelids, etc.), with more than 120 species are known to contribute to the frameworks (Hong, 1980).

The non-calcareous MPOs (box 2; Fig. 1). This compartment encompasses erect macrophytes (arborescent and shrubby; e.g. *Phyllariopsis brevipes*, *Sebdenia dichotoma*).

Benthic filter- and suspension-feeders (box 3; Fig. 1). A large number of filter- and suspension-feeders dwell in the coralligenous outcrops: bryozoans (e.g. *Pentapora fasciata*), cnidarians (e.g. *Paramuricea clavata*, *Eunicella cavolini*), sponges (e.g. *Agelas oroides*), etc.

Bio-eroders (box 4; Fig. 1). Numerous organisms, whether microborers, macroborers or grazers (i.e. raspers), erode calcareous concretions, in particular the excavating sponges (Clionaidae), cyanobacteria, molluscs, and sea urchins.

Browsers - Grazers (box 5; Fig. 1). This compartment encompasses herbivores and carnivorous organisms that browse benthic non-calcareous MPOs and invertebrates, other than builders.

Planktivorous teleosts (e.g. *Anthias anthias*), **predatory teleosts** (e.g. *Diplodus* spp.) and **cephalopods** (e.g. *Octopus vulgaris*), **high-level predators** (e.g. *Epinephelus marginatus*, *Dentex dentex*) (boxes 6, 7 and 8; Fig. 1) encompass all teleosts and cephalopods that could be sampled by visual censuses. Planktivorous teleosts, although exploiting the water column, and therefore another ecosystem, are taken into account here because they spend part of their life (e.g. at night) in coralligenous outcrops.

Benthic POM (box 9; Fig. 1). This compartment corresponds essentially to the fraction of dead MPOs, detritus imported from adjacent habitats, and all kinds of particulate matter.

Detritus feeders (box 10; Fig. 1). Detritus feeders constitute a complex compartment. Here we have chosen to quantify Holothurioidea and *Bonellia viridis* as proxies.

Other compartments, not numbered in the conceptual model (Fig. 1; plankton, POM, pelagic microbial loop, pelagic DOC, POM), will be not quantified here because of the difficulty of obtaining data in the framework of a monitoring approach.

Compartments 1 to 5, 9 and 10 were sampled in part using 30 photographic quadrats 0.5-m × 0.5-m along a 40-m long transect (Deter *et al.*, 2012) and species seen during the field work. The coralligenous composition in terms of species was evaluated as 1 666 species (315 MPOs, 61 unicellular eukaryotes, 1290 metazoans including 110 fish species) according to Ballesteros (2006). Here, the builder (box 1), filter (box 3) and browser-grazer species (box 5) taken into account are the principal species to be considered for the inventory listed by UNEP-MAP-RAC/SPA (2011). For browser-grazers, we have added 5 opisthobranchs (*Cratena peregrina*, *Flabellina affinis*, *F. pedata*, *Felimare picta*, *Peltodoris atromaculata*). The number of strata for builders (box 1) was evaluated by the use of the Rapid Visual Assessment (RVA) method proposed by Gatti *et al.* (2012) and modified by the INDEX-COR method (Stéphane Sartoretto pers. comm.).

The compartments of teleosts and cephalopods (boxes 6 to 8; Fig. 1) were estimated by visual censuses at a standardized daytime (10:00 to 16:00 UT) during the warm season (summer-autumn) in the same site than benthic compartments.

All teleosts and cephalopods were counted within ten linear 20-m long and 2-m wide transects. Total length (to nearest 2 cm) of individuals and the number of individuals per species were noted. These data enable calculation of teleost biomass.

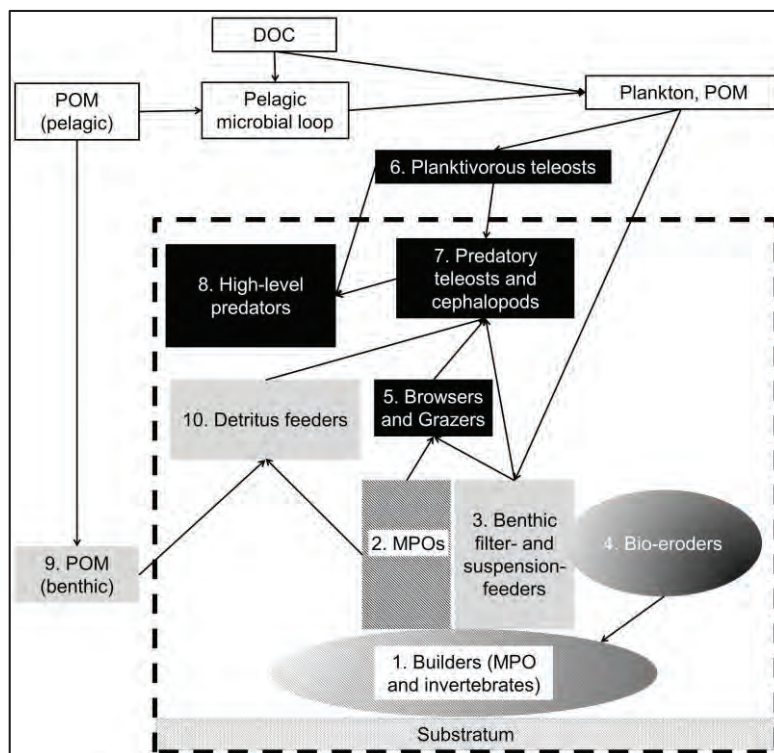


Fig. 1: Conceptual model of the functioning of a coralligenous ecosystem. For functional compartments and box numbers, see text. Primary producers (MPOs) are in hatched frame; predators and browsers - grazers are in black; pelagic particular organic matter (POM), pelagic microbial loop, plankton and dissolved organic carbon (DOM) are in white; benthic POM, detritus feeders, benthic filter-feeders are in grey; compartments that belong to several categories are in gradient color. The sensu stricto coralligenous ecosystem is included within the hatched rectangle.

The Specific Relative Diversity Index (SRDI) is the mean number of species met with per transect. Considered components of the coralligenous habitat and respective evaluation criteria are presented in Table 1.

Discussion and conclusion

The assessment of the EBQI in coralligenous outcrops usually calls for complex diving logistics because of the depth at which they thrive. We have chosen the use of photographic quadrats as sampling method because it involves spending less time for diving and provides information for several compartments. In fact, photographic quadrats are currently used in several protocols (Cecchi & Piazzini, 2010; Kipson *et al.*, 2011; Deter *et al.*, 2012). However, the photographic methods involves image processing, which is also time-consuming. The use of the EBQI needs to (i) to assess the status of the compartments in non-human impacted areas and (ii) to be adapted according to biogeographic features. A similar methodology has already been tested on *Posidonia oceanica* meadows, the best documented marine ecosystem of the Mediterranean coastal areas, and it has been applied to seventeen sites (Personnic *et al.*, 2014), showing that (i) EBQI was not redundant with already existing indices and (ii) EBQI was robust even if some arbitrary choices are possible for the considered compartments and their weighting (expert judgment).

Tab. 1: Functional compartments of the coralligenous ecosystem, box number, weight and parameters used to evaluate the ecological quality (status from 0, very bad to 4, very good), cp: calibration in process, * species listed by UNEP-MAP-RAC/SPA (2011), ^o 5 opisthobranchs added (see the text).

Box number / weight	Functional compartment	Parameters	Status				
			4	3	2	1	0
1 / 5	Builders (MPOs and invertebrates)	Number of builders species (34 listed)*	≥25	15 to 24	10 to 14	6 to 9	≤5
		Cover of non-disrupter species (%) (others than invasive, eroder, tolerant species)	>75%	>50 to 75%	>25 to 50%	>0 to 25%	0%
2 / 3	Non-calcareous MPOs (facies dominated by MPOs)	Number of strata (basal (0-5 cm height), intermediate (5-15 cm) and upper (>15 cm))	3 strata >50% of cover	3 strata <50% of cover	2 strata	1 stratum	0 stratum
		Number of MPO species (34 listed)*	≥25	15 to 24	10 to 14	6 to 9	≤5
		Cover of non-disrupter species (%)	>75%	>50 to 75%	>25 to 50%	>0 to 25%	0%
3 / 5	Non-calcareous MPOs (facies dominated by fauna)	Number of strata (arborescent, shrubby, turf-forming, encrusting)	4 strata	3 strata	2 strata	1 stratum	0 stratum
		Number of strata	4 strata	3 strata	2 strata	1 stratum	0 stratum
3 / 5	Filter and suspension feeders	Density (m ²) or cover (%)	cp	cp	cp	cp	cp
		Number of filter species (43 listed)*	≥30	20 to 29	12 to 19	6 to 11	≤5
4 / 5	Bio-eroders	Eroding sponges (Clionaidae)	Scarce papillae	Few papillae	Moderately abundant papillae	Abundant papillae	Massive specimens
		Density of sea urchins (<i>Echinus melo</i> and <i>Sphaerechinus granularis</i>) or erosion marks	cp	cp	cp	cp	cp
5 / 3	Browsers and grazers	Density of invertebrates (m ²)	cp	cp	cp	cp	cp
		Number of browsers and grazers (12 listed)* ^o	≥10	7 to 9	4 to 6	3 - 2	≤1
6 / 2	Planktivorous teleosts 'planktivorous'	Zooplankton feeders (kg WM 100 m ⁻²)	cp	cp	cp	cp	cp
		Omnivores teleosts (kg WM 100 m ⁻²)	cp	cp	cp	cp	cp
7 / 2	Predatory teleosts	Teleosts (kg WM 100 m ⁻²)	cp	cp	cp	cp	cp
8 / 4	Piscivorous teleosts	Teleosts (kg WM 100 m ⁻²)	cp	cp	cp	cp	cp
6-8 / 3	All teleosts	Specific Relative Diversity Index (SRDI)	≥8	<8 to ≥6	<6 to ≥4	<4 to ≥3	<3
		Cover (%)	0-10%	>10 to 25%	>25 to 50%	>50 to 75%	>75%
10 / 3	Detritus feeders	Density of Holothurioidea, and <i>Bonellia viridis</i>	cp	cp	cp	cp	cp

However, since coralligenous outcrops are a much more complex and less well-known ecosystem than *P. oceanica* meadows, calculation of coralligenous EBQI will require the participation of experts in several fields of marine ecology. Its implementation may require the participation of several Mediterranean research teams and could contribute to the development of new scientific networks.

Acknowledgements

This work is included in the scientific program GECCO med, funded by the French Water Agency Rhône Méditerranée Corse (AERMC) and the French Agency of Marine Protected Areas (AAMP).

Bibliography

- BALLESTEROS E. (2006) - Mediterranean coralligenous assemblages: a synthesis of present knowledge. *Oceanogr. Mar. Biol.: Ann. Review*, 44: 123-195.
- CECCHI E., PIAZZI L. (2010) - A new method for the assessment of the ecological status of Coralligenous assemblages. 46 Congress SIBM form testi v., February 11th 2010.
- DALKEY N., HELMER O. (1963) – An experimental application of the Delphi method to the use of experts. *Manage Sci.*, 9: 458-467.
- DETER J., DESCAMP P., BALLESTA L., BOISSERY P., HOLON F. (2012) - A preliminary study toward an index based on coralligenous assemblages for the ecological status assessment of Mediterranean French coastal waters. *Ecol. Indic.*, 20: 345-352.
- GATTI G., MONTEFALCONE M., ROVERE A., PARRAVICINI V., MORRI C., ALBERTELLI G., BIANCHI C.N. (2012). - Seafloor integrity down the harbor waterfront: the coralligenous shoals off Vado Ligure (NW Mediterranean). *Adv. Oceanol. Limnol.*, 3: 51-67.
- HONG J.S. (1980) – Etude faunistique d'un fond de concrétionnement de type coralligène soumis à un gradient de pollution en Méditerranée nord-occidentale (Golfe de Fos). Thèse de Doctorat. Université d'Aix-Marseille II: 6+137+108 pp, 1 plate.
- KIPSON S., FORT M., TEIXIDO N., CEBRIAN E., CASAS E., BALLESTEROS E., ZABALA M., GARRABOU J. (2011) - Rapid biodiversity assessment and monitoring method for highly diverse benthic communities: A case study of Mediterranean coralligenous outcrops. *PLoS ONE*, 6(11): e27103.
- UNEP-MAP-RAC/SPA (2011) - Proposal of standard methods for inventorying and monitoring coralligenous and rhodoliths populations. Working document, prepared by G. Pergent for the tenth meeting of Focal Points for SPAs, Marseilles, France, 17-20 May 2011, UNEP(DEPI)/MED WG 359/10. RAC/SPA Publ., Tunis: 23 pp.
- PERSONNIC S., BOUDOURESQUE C.-F., ASTRUCH P., BALLESTEROS E., BELLAN-SANTINI D., BONHOMME P., BOTHA D., FEUNTEUNE E., HARMELIN-VIVIEN M., PERGENT G., PERGENT-MARTINI C., PASTOR J., POGGIALE J.-C., RENAUD F., THIBAUT T., RUITTON S. (2014) - An ecosystem-based approach to evaluate the status of a Mediterranean ecosystem, the *Posidonia oceanica* seagrass meadow. *PloS ONE*, 9(6): e98994.

